

California Casual Chic: 578 Tahos Road, Orinda



Presented by:

Clay Allen, broker #00677050

Cell: 925.451.6000

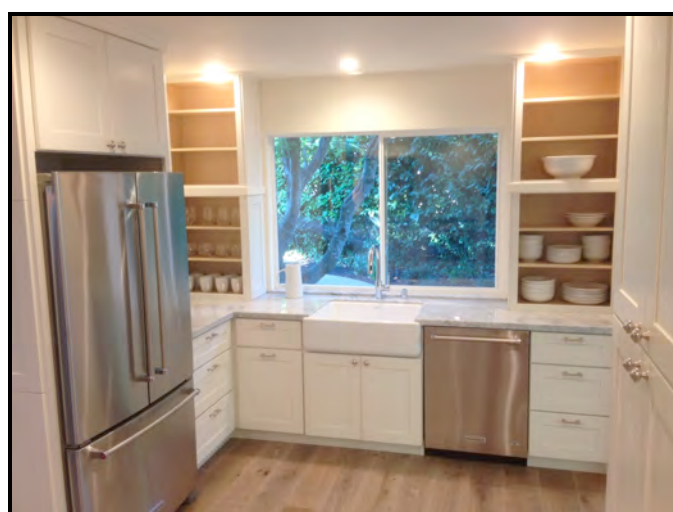
Gordon Allen, broker # 00834178

Cell: 925.254.3003

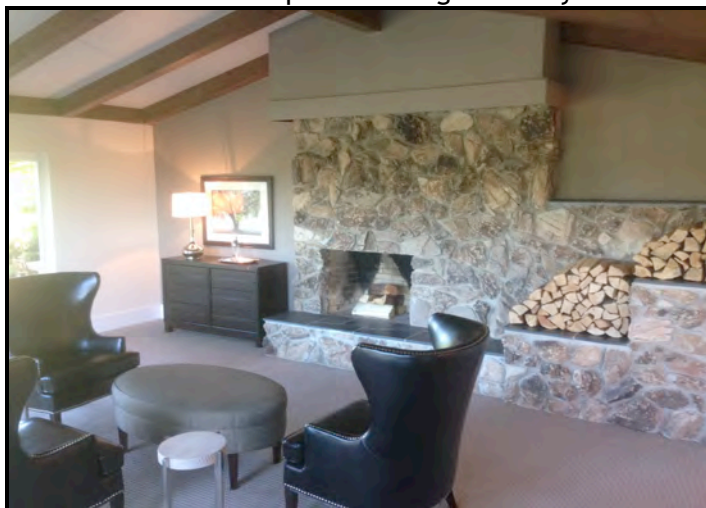
- \$1,700,000
- Approximately 2,572 Square Feet*
- Two-zone Carrara Kitchen open to Fam Rm
- Over ½ Acre, level gardens w/ pond
- 4 Bedrooms / 3.5 Bathrooms / 2-Car Garage
- Premium private panoramic view lot
- 2016 Renovation by Award-winning Designer
- VTour: www.circlepix.com/home/6M78R8



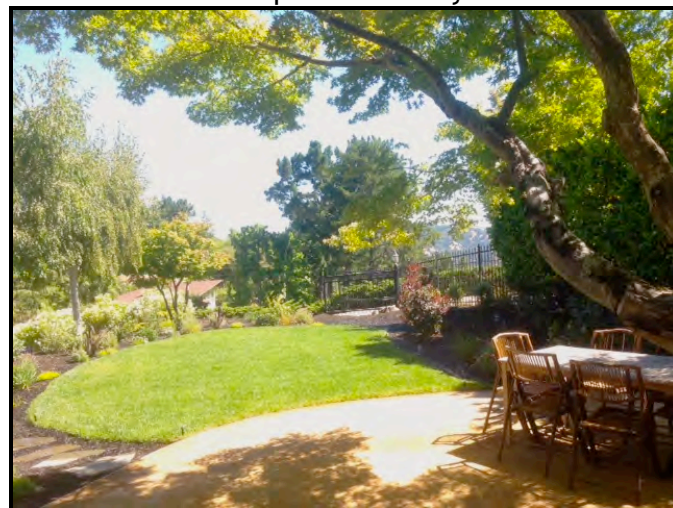
Carrara Kitchen w/ Open Shelving & Pantry Cabinets



Two-zone Kitchen opens to Family Room & Garden



Bright & Expansive Living Room with Deck



Over 1/2 acre, level gardens & panoramic views

* Per plans

(Over for Additional Features)

Additional Home Features:

ADDITIONAL INTERIOR AND EXTERIOR FEATURES:

- California casual chic; mid-century meets modern farmhouse!
- 2016 renovation by award-winning designer
- One-level living with high volume beamed ceilings
- Two-zone Carrara kitchen with open shelving & pantry cabinets
 - Opens to Family Room & gardens
 - Dual fuel range
 - French-door Refrigerator
 - Sharp under-counter microwave
 - Two farm style sinks each with garbage disposals
 - Abundant pantry cabinets with built-in electrical outlets
- Wide plank white oak flooring with wire brushed grey smoke finish
- Parged and old world plaster walls
- Family & Dining Rooms open to level gardens with flagstone patio
- Voluminous Living Room with stone fireplace, expansive deck & views
- Master suite with Carrara bathroom & exterior access
- Junior suite ideal for multi-generation or homecare use with exterior access
- Sky-lit sunny & spacious laundry room
- Two wood-burning fireplaces
- New windows & doors
- Rear covered patio
- Central Heat & Air-conditioning
- Enjoy the panoramic views from the easy-going level garden or pond/waterfall setting
- Rare, elevated private lot with off-street parking
- First time on market in over 50 years
- Assessor's Parcel #268-470-335

Please note: All information is approximate and is not guaranteed

For additional information, contact:

Clay Allen, broker
925.451.6000

Gordon Allen, broker
925.254.3003



For further information, contact:

**Clay Allen, broker #00677050
Cell: 925.451.6000**

**Gordon Allen, broker #00834178
Cell: 925.254.3003**

